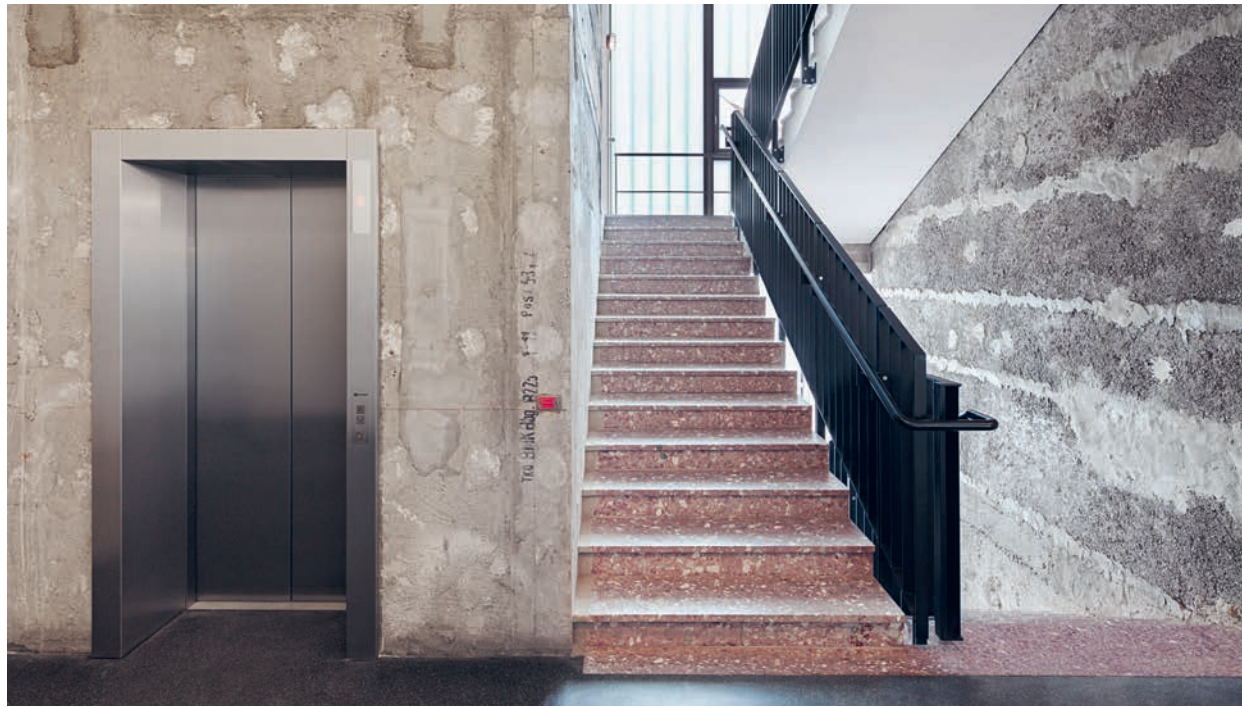


1974 → 2017

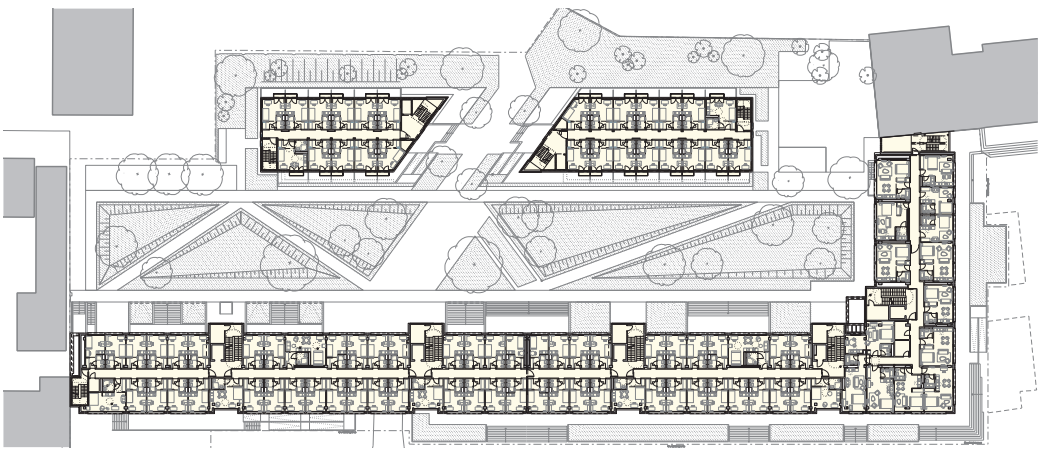
The former office complex at Frankfurter Tor now houses serviced apartments and student accommodation.



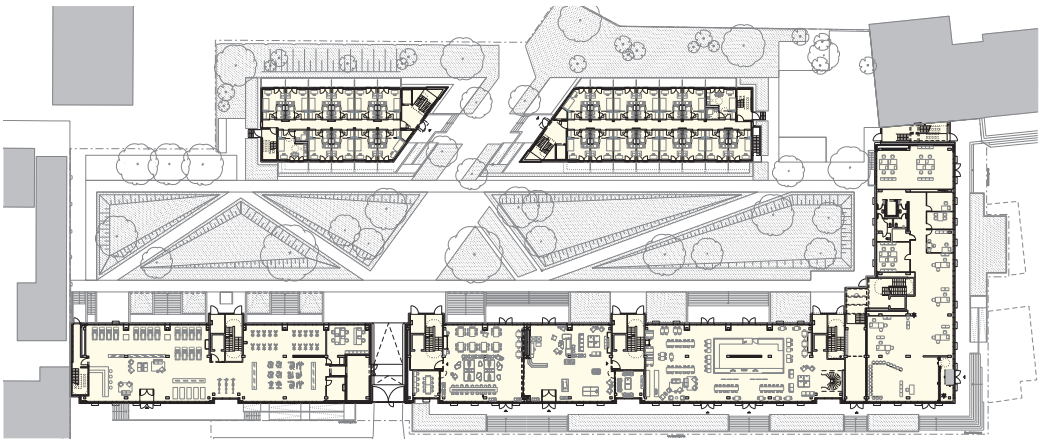
Reinforced concrete columns along the exterior walls and inside this former office building, together with the reinforced concrete ceilings, provide a solid supporting structure. The building has been completely renovated and a new story was added. The color scheme used for the façade references the copper roofs of the towers at Frankfurter Tor. The complex now houses a total of 567 residential units, 485 of which are student apartments, and 82 micro-apartments grouped around an attractive inner courtyard. Large landscaped areas offer space for residents to relax and function as popular communal spaces. The large student lobby functions as a central attraction and offers ideal conditions for flexible use. The student apartments range from 18 to 24 square meters in size, while the serviced apartments are between 25 and 39 square meters.



Architect GBP Architekten **Completion** 2017 **Original building** Office complex, approx. 1974 **Gross floor area before** 13,553 m² **Gross floor area after** 25,711 m² **Number of apartments** 567 **Address** Frankfurter Tor 8A / Warschauer Straße 5–8, 10243 Berlin, Germany



Standard floor plan



Ground floor plan



The reinforced concrete skeleton has been preserved and now houses vibrant community spaces and residences.